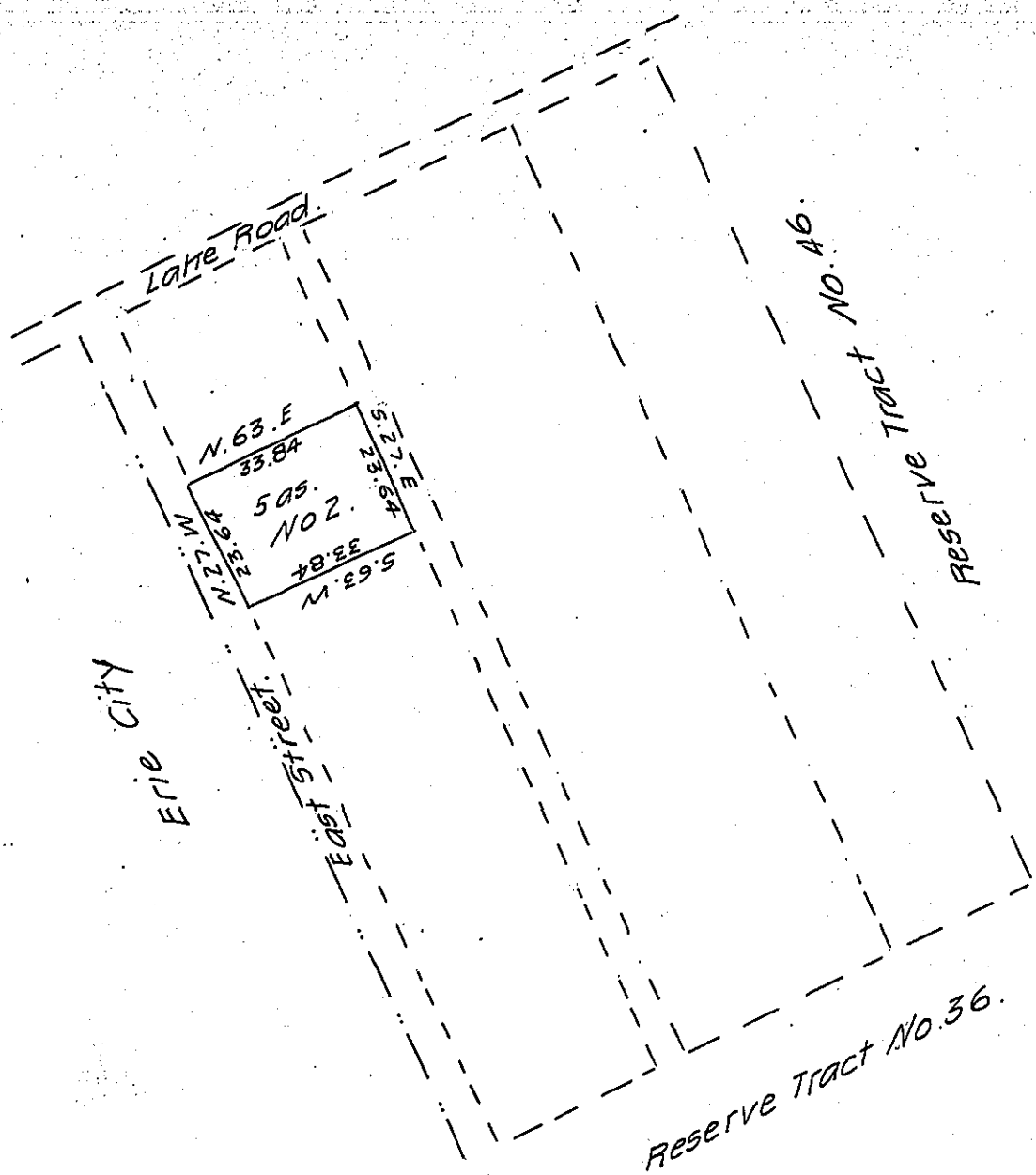


FORM NO 1.



A draught of part of Reserve Tract No. 37 in the Erie Reserve in Mill Creek Township, Erie County, Surveyed Oct. 24, 1864, for S. Merwin Smith by virtue of the purchase of Christian Kingsley containing five acres.

Wm. Benson

To Hon. James P. Barr

County Surveyor

Surveyor General

Description - Being Subdivision (No. 2) of A. W. Brewster's subdivision of Reserve tract No. 37, bounded on the north by subdivision No. 1 on the east by 60 ft. street, on the south by subdivision No. 3 and on the west by East Street containing five acres of land.

IN TESTIMONY that the above is a copy of the original remaining on file in the Department of Internal Affairs of Pennsylvania, made conformably to an Act of Assembly approved the 16th day of February, 1833, I have hereunto set my Hand and caused the Seal of said Department to be affixed at Harrisburg, this twenty-sixth day of May 1908

Henry Houck
Secretary of Internal Affairs.